



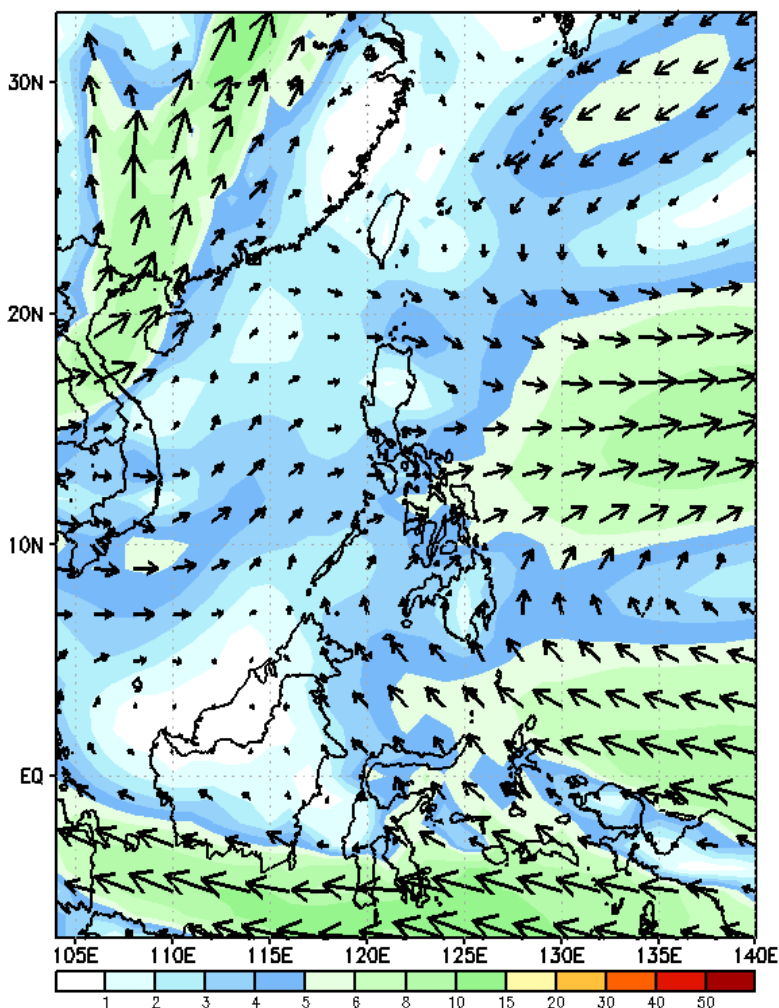
# Week 1 & Week 2 Forecast for the Philippines using GEFS Model



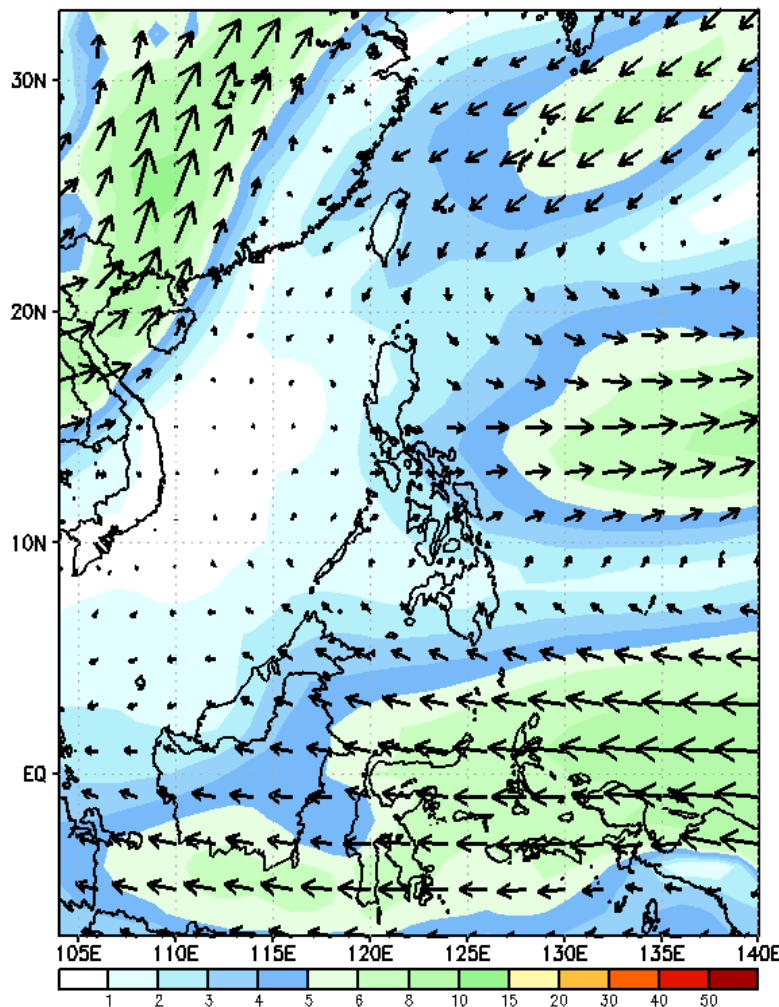
# GEFS Week-1 Wind Forecasts:

Week 1: Aug 02-08, 2024

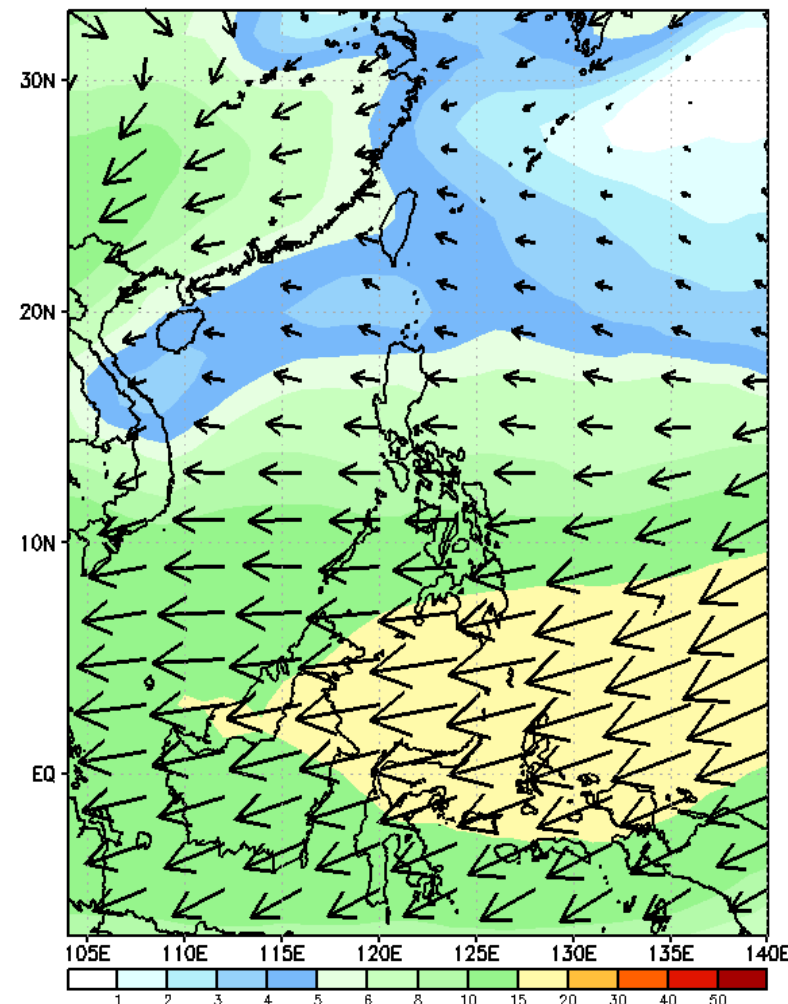
GEFS Week-1 850-hPa Wind Total  
Valid: 20240802 - 20240808



GEFS Week-1 700-hPa Wind Total  
Valid: 20240802 - 20240808

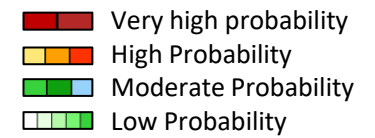


GEFS Week-1 200-hPa Wind Total  
Valid: 20240802 - 20240808



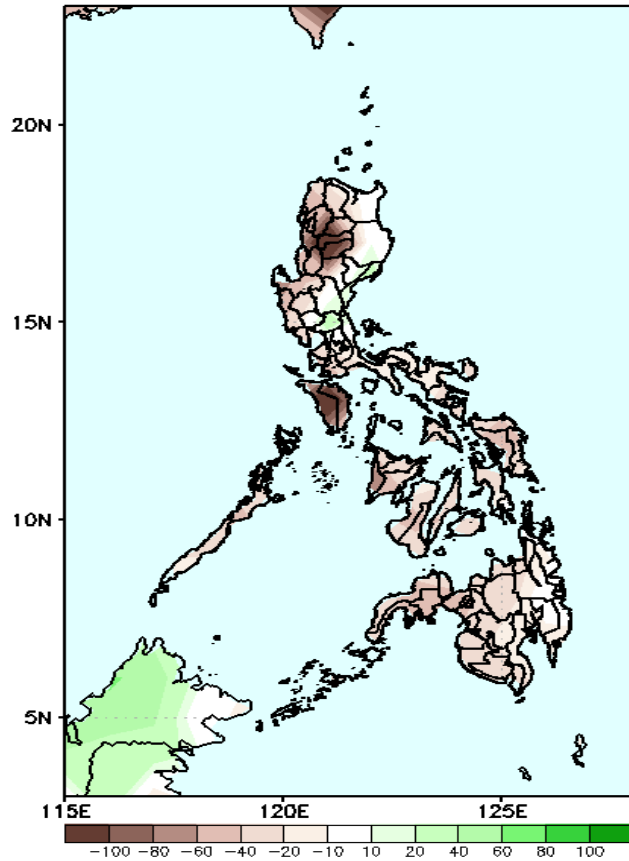
Weak southwest Monsoon affecting western sections of the country. Easterlies affecting the rest of the country during the forecast period

# Precipitation Anomaly and Exceedance Probability > 25/50 mm



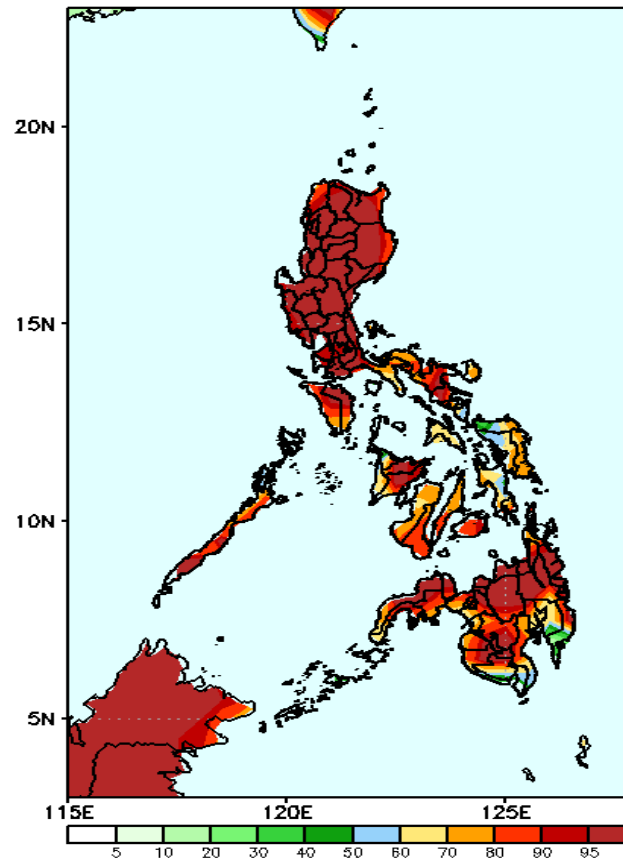
Week 1: Aug 02-08, 2024

GEFS Week-1 Precip Anomaly  
Valid: 20240802 - 20240808



Rainfall deficit of more than 100mm in Mindoro, Mt. Province and Ifugao and 20-80mm for the rest of the country

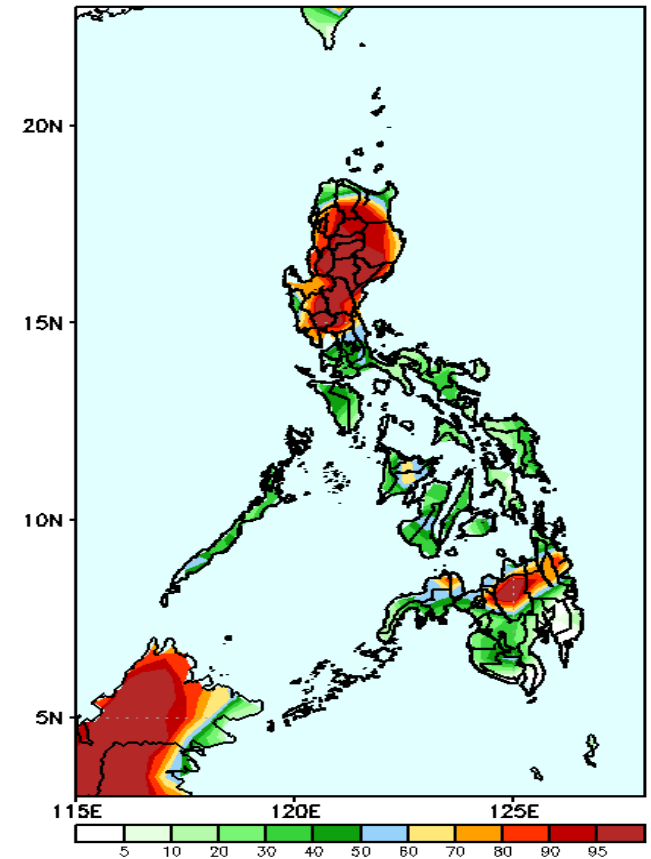
GEFS Week-1 Exceedance Prob. > 25mm  
Valid: 20240802 - 20240808



### Probability to Exceed 25mm

- High to very high over most parts of the country;
- Moderate to high over Palawan, Eastern Visayas and Davao Region.

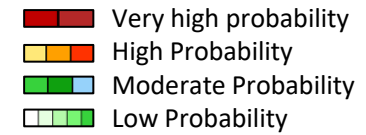
GEFS Week-1 Exceedance Prob. > 50mm  
Valid: 20240802 - 20240808



### Probability to Exceed 50mm

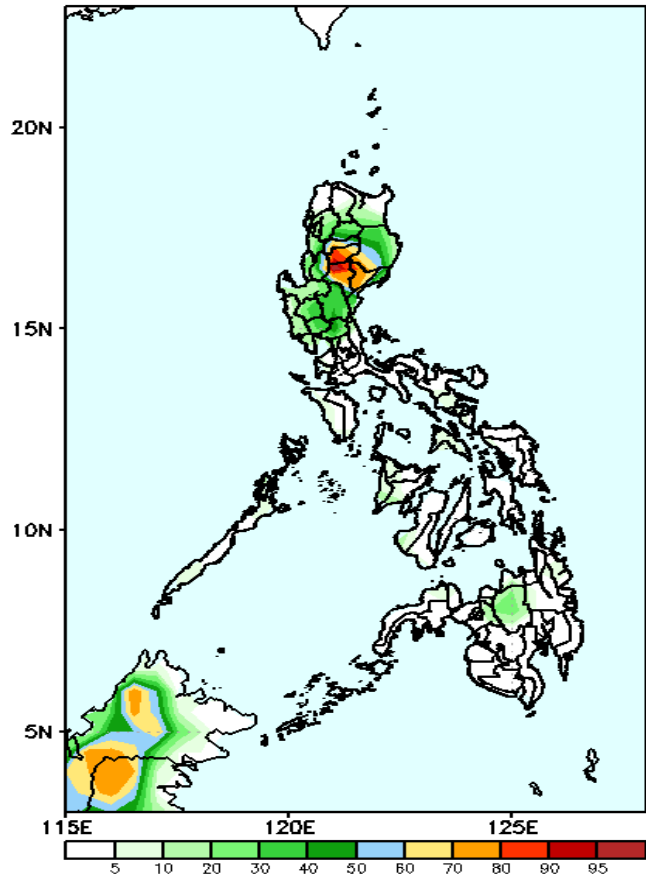
- High to very high over most of Northern and Central Luzon, and Bukidnon;
- Moderate to high over NCR, most of CALABARZON, northern part of Northern Luzon, Zambales, Bataan, Iloilo, and the rest of the northern portion of Mindanao;
- Low to moderate over the rest of the country.

# Exceedance Probability > 100/150/200 mm



## Week 1: Aug 02-08, 2024

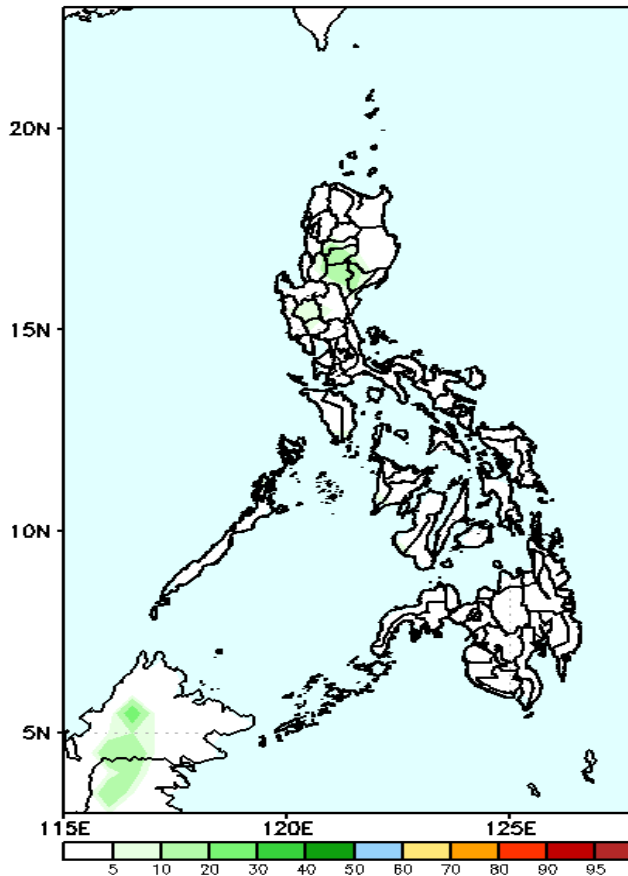
GEFS Week-1 Exceedance Prob. > 100mm  
Valid: 20240802 - 20240808



### Probability to Exceed 100mm

- Moderate to high over Mountain Province, Ifugao, Nueva Vizcaya and portions of Isabela, and Benguet.
- Low over the rest of the country.

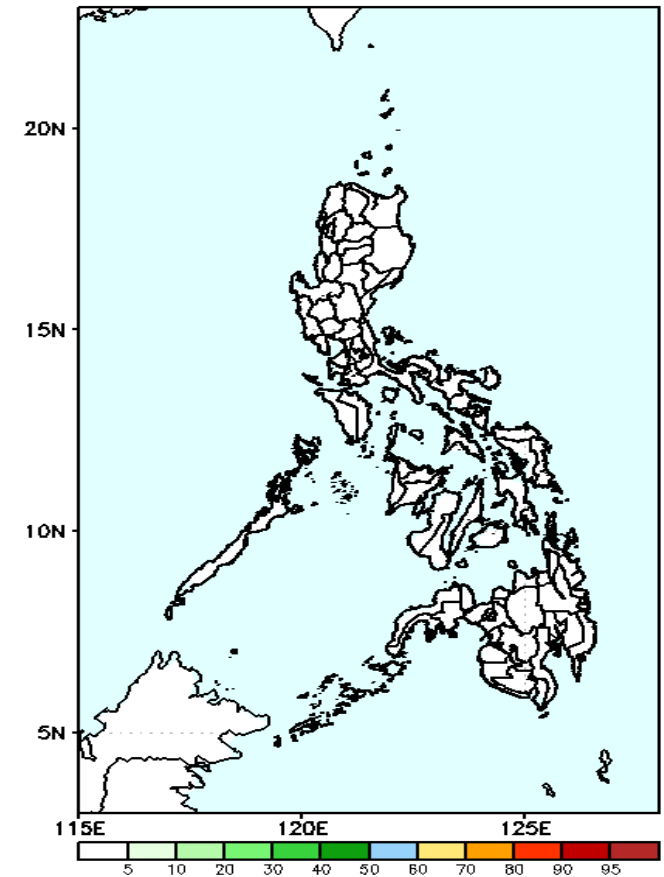
GEFS Week-1 Exceedance Prob. > 150mm  
Valid: 20240802 - 20240808



### Probability to Exceed 150mm

- Low across the country.

GEFS Week-1 Exceedance Prob. > 200mm  
Valid: 20240802 - 20240808



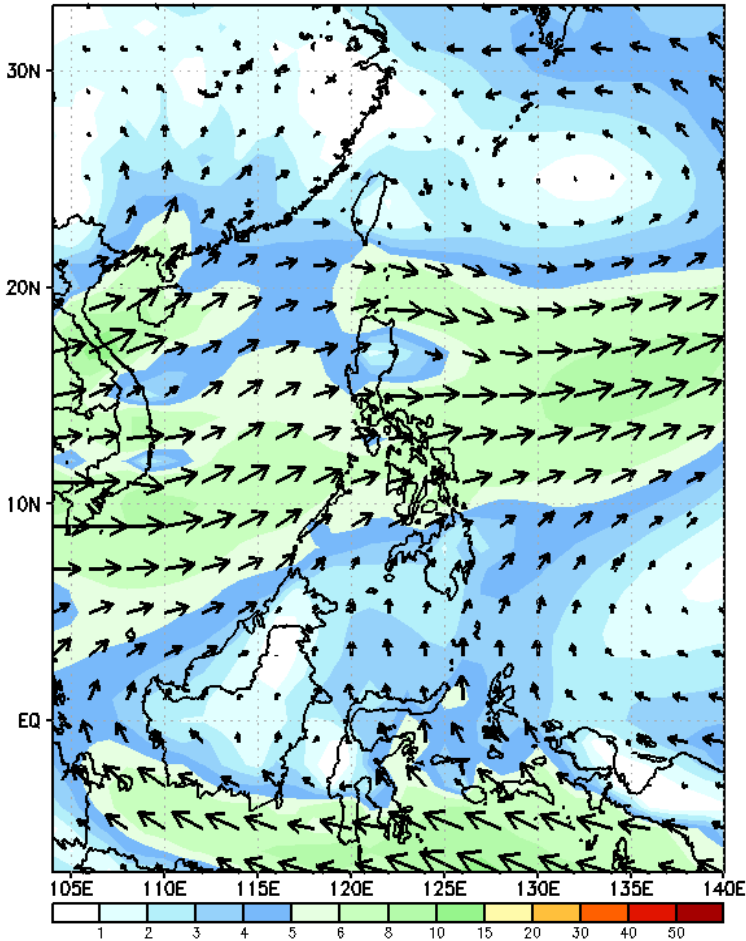
### Probability to Exceed 200mm

- Low across the country.

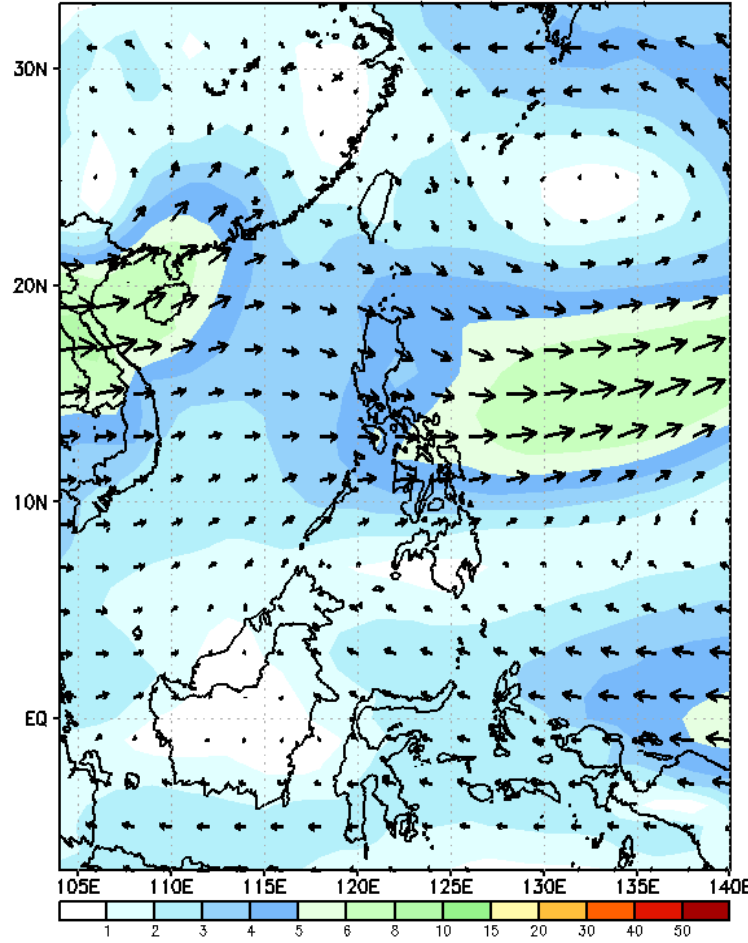
# GEFS Week-2 Wind Forecasts:

Week 2: Aug 09-15, 2024

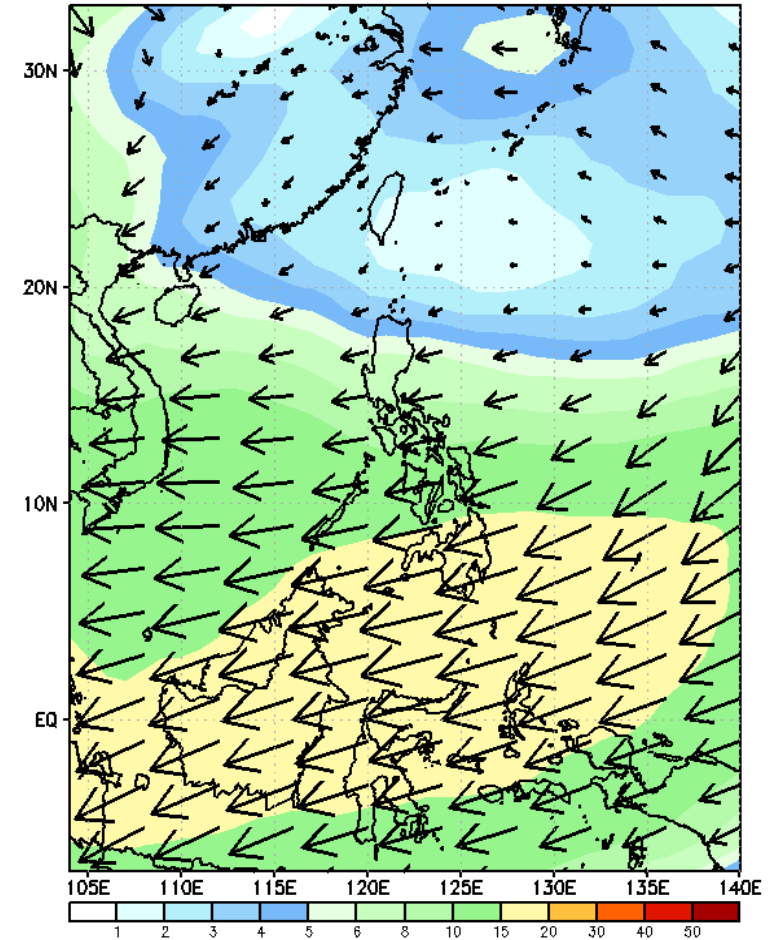
GEFS Week-2 850-hPa Wind Total  
Valid: 20240809 - 20240815



GEFS Week-2 700-hPa Wind Total  
Valid: 20240809 - 20240815



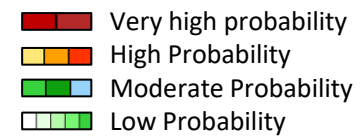
GEFS Week-2 200-hPa Wind Total  
Valid: 20240809 - 20240815



Weak southwest Monsoon affecting western sections of the country. Easterlies affecting the rest of the country during the forecast period

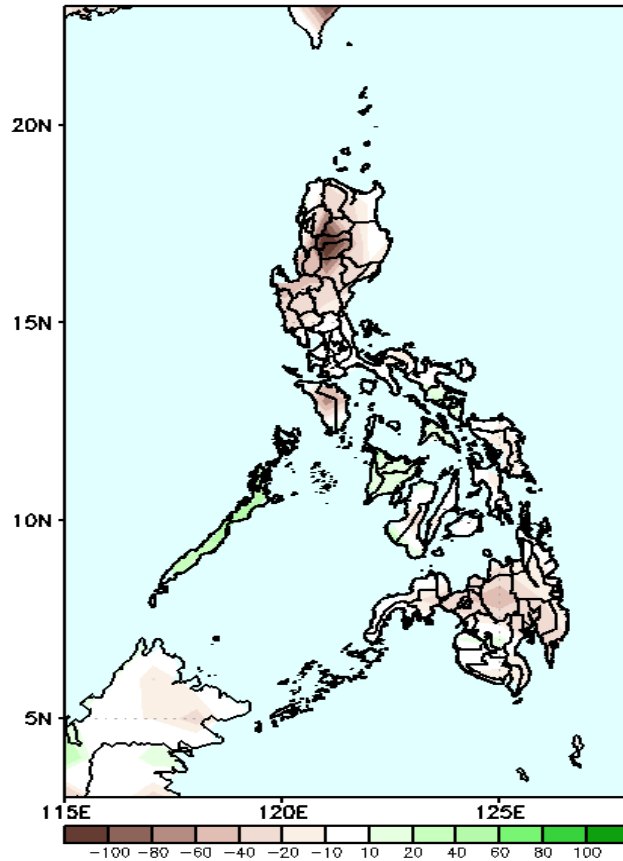


# Precipitation Anomaly and Exceedance Probability > 25/50 mm



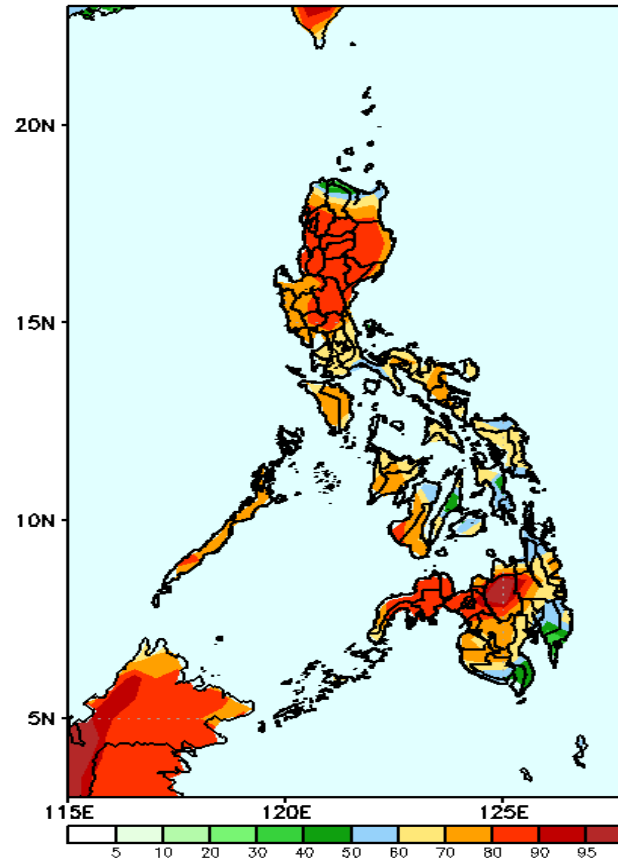
Week 2: Aug 09-15, 2024

GEFS Week-2 Precip Anomaly  
Valid: 20240809 - 20240815



Rainfall deficit of 20-90mm is expected in most part of the country except in Palawan and Panay Island where there is 10-20mm increase of rainfall.

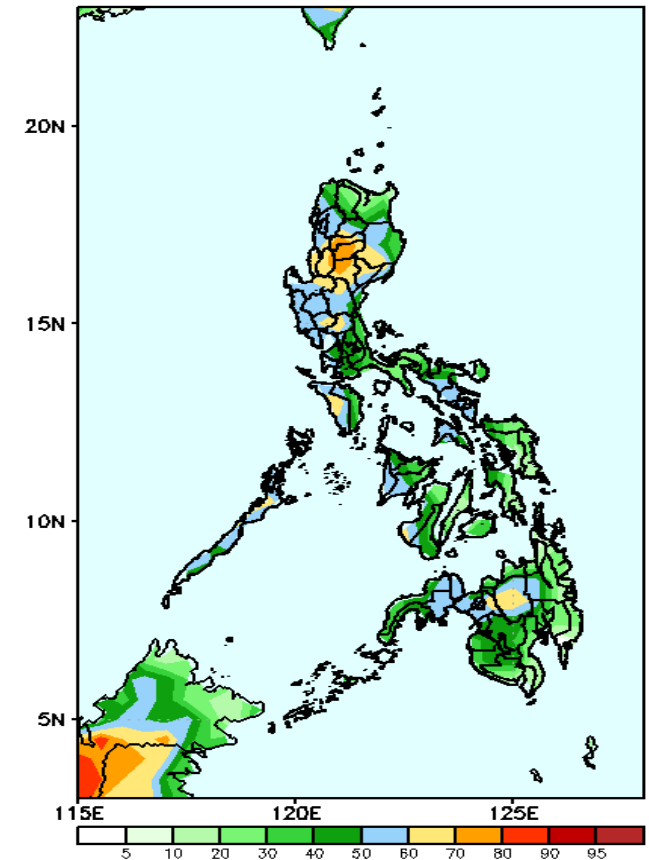
GEFS Week-2 Exceedance Prob. > 25mm  
Valid: 20240809 - 20240815



**Probability to Exceed 25mm**

- Moderate to high across the country.

GEFS Week-2 Exceedance Prob. > 50mm  
Valid: 20240809 - 20240815

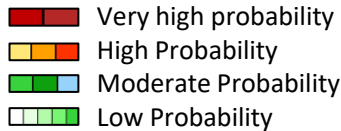


**Probability to Exceed 50mm**

- Moderate to high over most of CAR, Isabela, Nueva Vizcaya, Central Luzon, Occidental Mindoro, Palawan, Antique, Bukidnon, and most of western Mindanao;
- Low to moderate over the rest of the country.

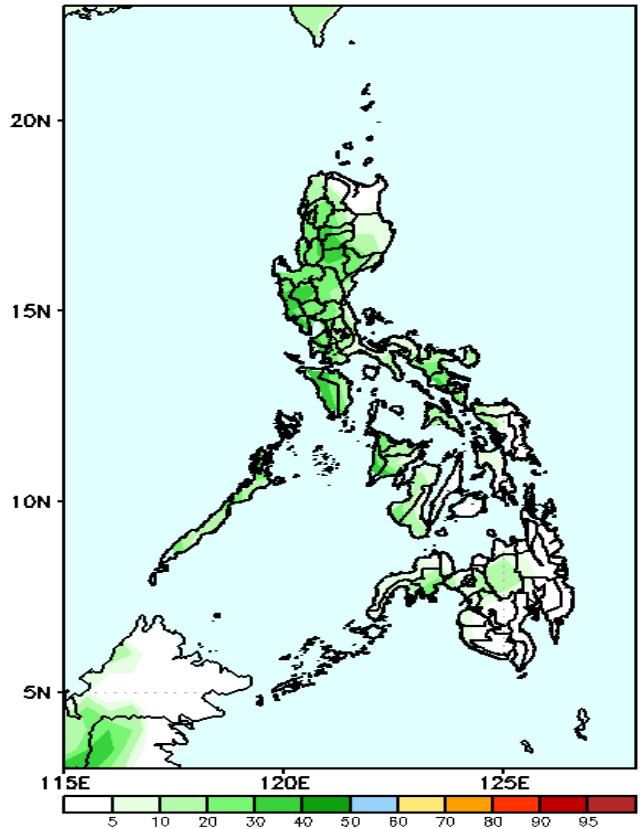


# Exceedance Probability > 100/150/200 mm



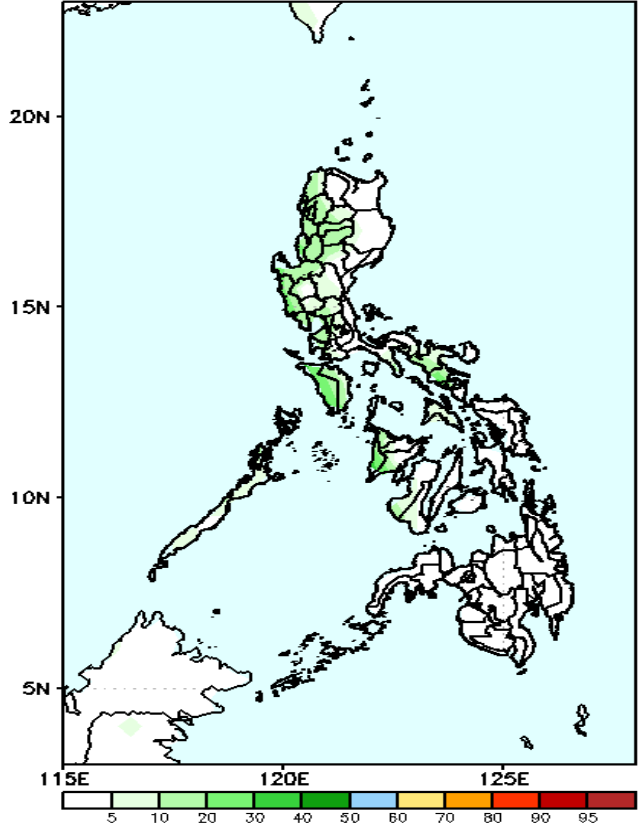
## Week 2: Aug 09-15, 2024

GEFS Week-2 Exceedance Prob. > 100mm  
Valid: 20240809 - 20240815



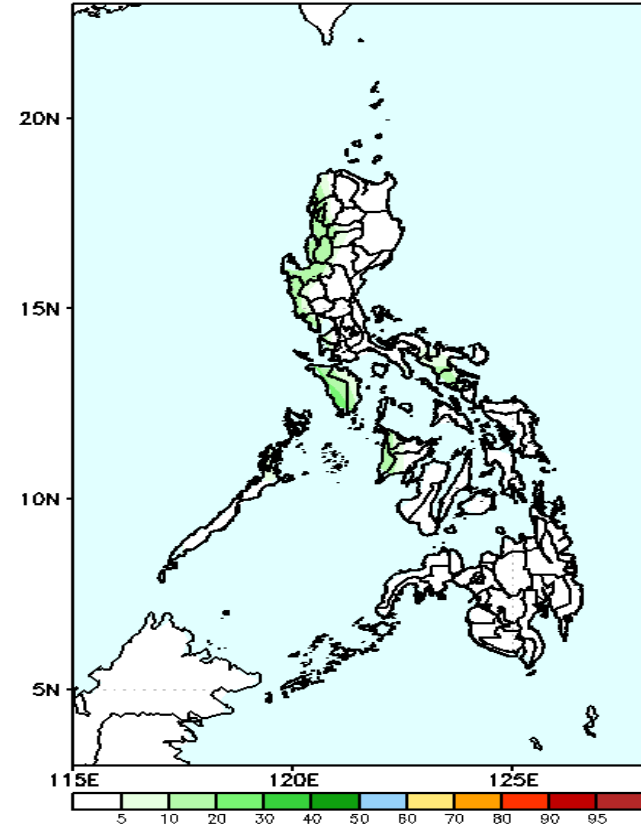
- Probability to Exceed 100mm**
- Low to Moderate over the Luzon;
  - Low over the rest of the country.

GEFS Week-2 Exceedance Prob. > 150mm  
Valid: 20240809 - 20240815



- Probability to Exceed 150mm**
- Low probability across the country.

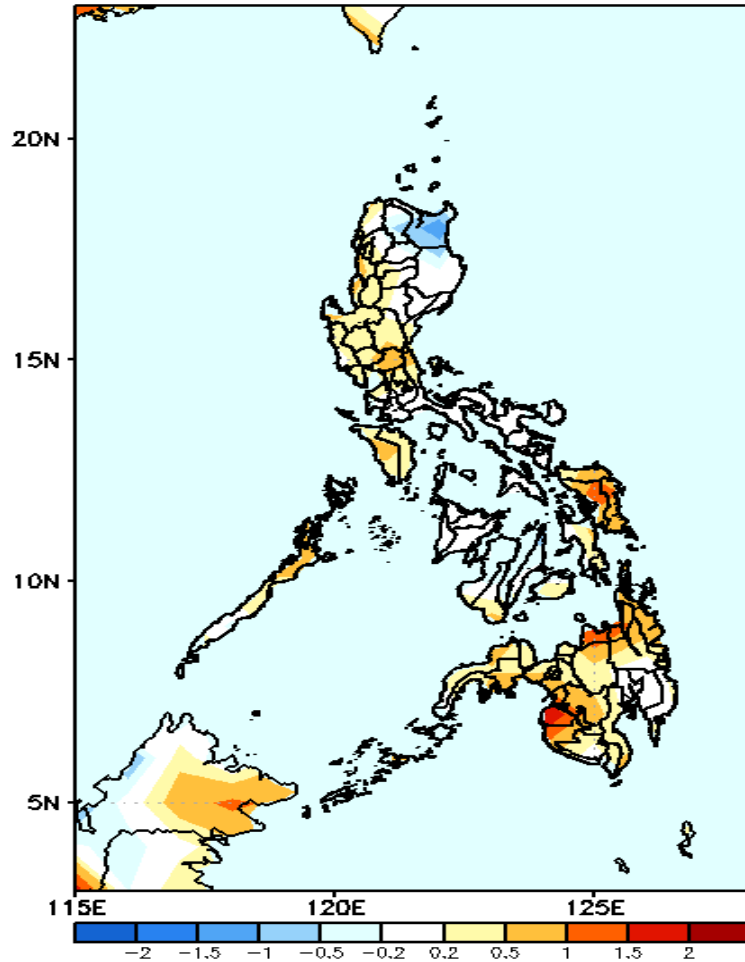
GEFS Week-2 Exceedance Prob. > 200mm  
Valid: 20240809 - 20240815



- Probability to Exceed 200mm**
- Low probability across the country.

# GEFS Week-1 & 2 Forecasts: T2m Anomaly

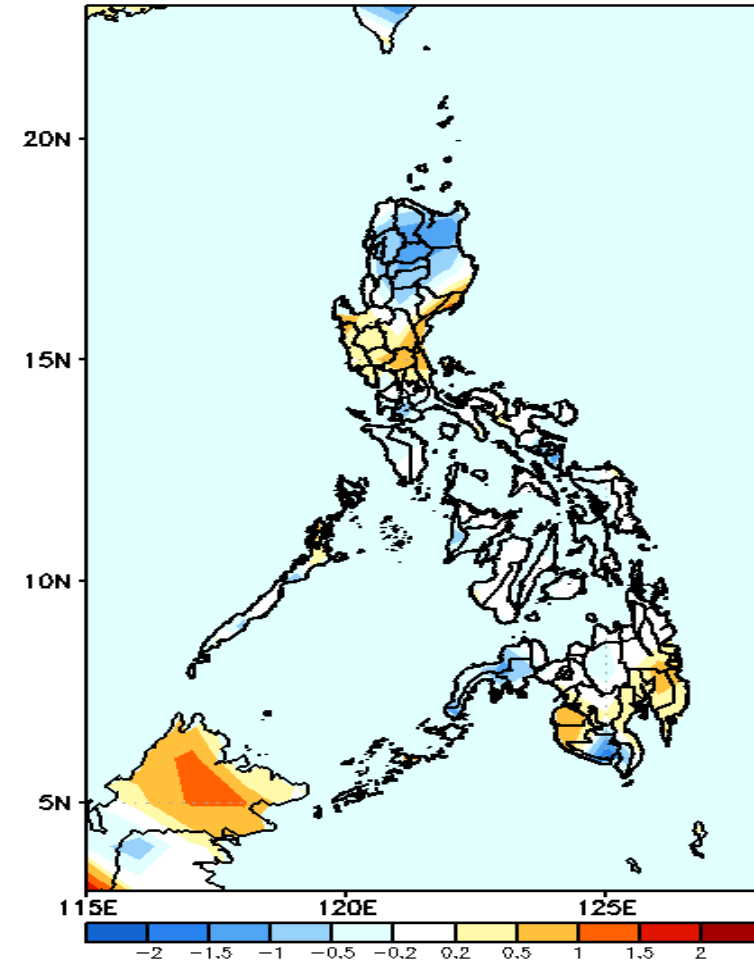
GEFS Week-1 T2m Anomaly  
Valid: 20240802 – 20240808



## 2m Temperature Week 1: Aug 02-08, 2024

Near to warmer surface air temperature will likely be experienced in most parts of the country except in Cagayan where slightly cooler than average surface air temperature is expected.

GEFS Week-2 T2m Anomaly  
Valid: 20240809 – 20240815



## 2m Temperature Week 2: Aug 09-15, 2024

Near to slightly warmer surface air temperature will likely be experienced in most parts of the country except in northern Luzon, Zamboanga Peninsula and South Cotabato where slightly cooler to cooler than average surface air temperature is expected.

